



JULY 2024

RETAINING WALLS

BY FIRTH





FIRTH'S RETAINING BLOCKS ARE LIKE LEGO FOR THE BACKYARD AND PERFECT FOR DIY. WITH OUR RANGE OF EASY TO ASSEMBLE OPTIONS YOU CAN CREATE A SIMPLE GARDEN BED OR RETAIN AND PROTECT A 1M BANK. SMALL, MEDIUM AND LARGE FIRTH RETAINING, IT JUST STACKS UP.

SMALL FORMAT

Ezi Wall®	03
Sedona Stone®	04

MEDIUM FORMAT

Garden Wall®	05
---------------------	-----------

LARGE FORMAT

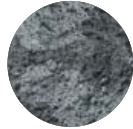
Country Manor®	06
Compac® III	07



Ezi Wall®

Firth Ezi Wall® is one of the lightest segmental wall systems available. Minimal foundation preparation is required, so walls are easily constructed using the unique interlocking system.

- Small size block: approx 5.6kgs
- Interlock system makes for easy installation
- Build curved, straight or terraced walls
- Available in three colours



Rockface



Ash



Onyx



↑ Vertical wall up to 0.5m* (60mm embedment)

57 units per m² / 7.14 units per lineal metre / # per pallet - 224 units

*Maximum laying height

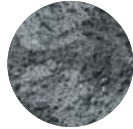


Ezi Wall®: Ash

Sedona Stone®

Keystone Sedona Stone® is ideal for creating low DIY walls, decorative tree rings, planters, raised garden beds or finishing your lawn edge.

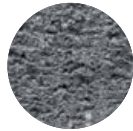
- Easy to install
- Rear-lip on retaining wall block makes installation fast and accurate
- Lightweight (weighs approx 5kgs)
- Build straight, curved or terraced walls
- Secure interlock system



Rockface

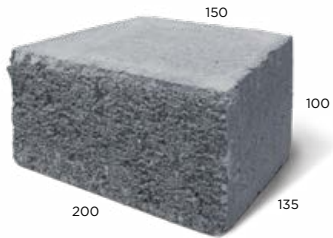


Ash



Charcoal


 Batter setback installation only



Straight-face
(Ash and Charcoal only)



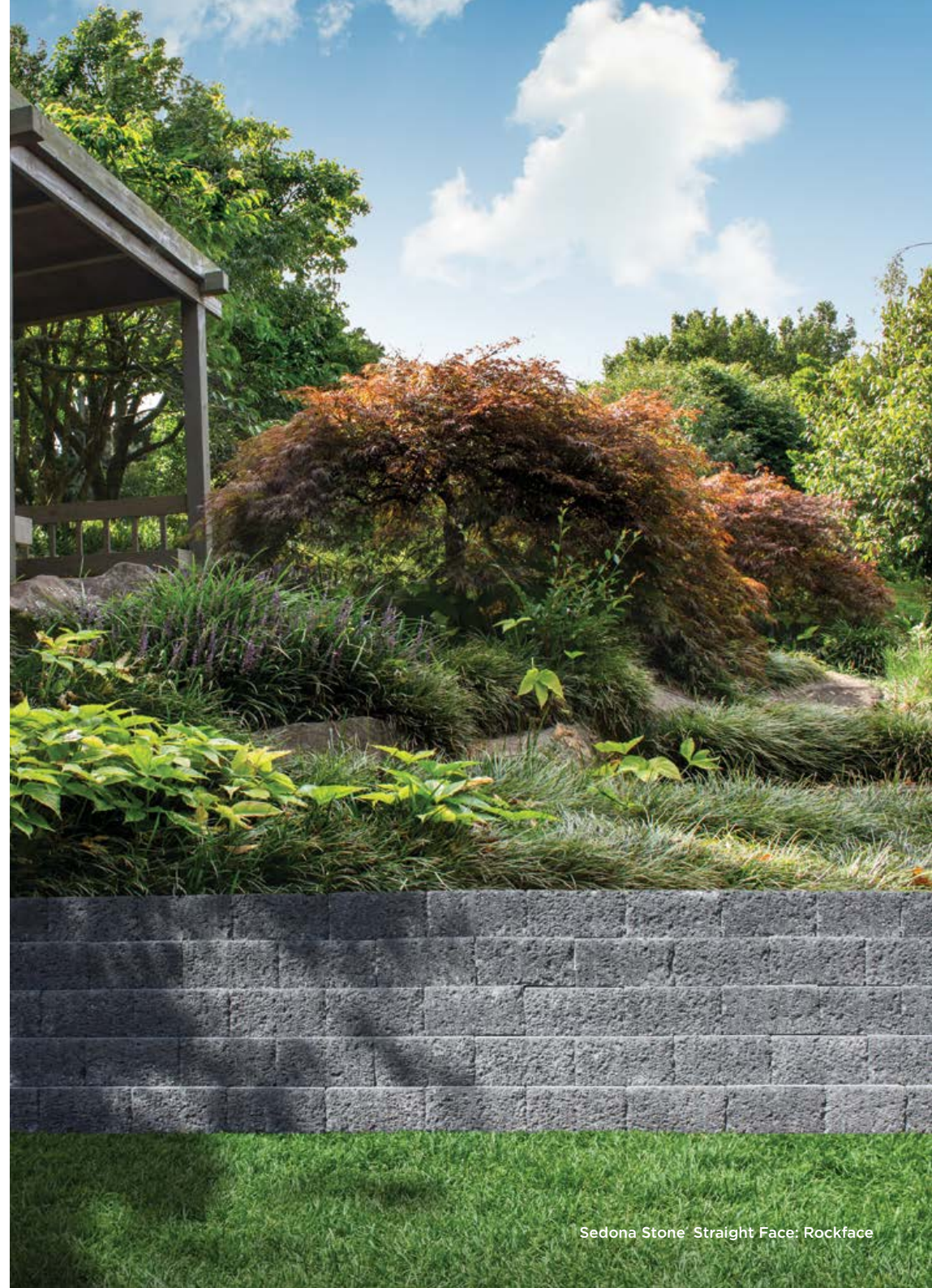
Tri-face
(Rockface only)

 Batter setback up to 0.5m* (60mm embedment)



50 units per m² / 5 units per lineal metre / # per pallet - 252 units

*Maximum laying height



Sedona Stone® Straight Face: Rockface

Garden Wall®

Keystone Garden Wall® has the natural look of quarried stone allowing it to blend in with any landscape. Perfect for landscape retaining walls, tree rings, patio, lawn edging and garden or flower borders.




Rockface

- Medium size block: approx 13kgs
- Interlock system makes for easy installation
- Build curved, straight or terraced walls
- Rear-lip on retaining wall block makes installation fast and accurate

 Batter setback installation only



Tri-face

 Batter setback up to 0.7m* (60mm embedment)



33.3 units per m² / 3.3 units per lineal metre / # per pallet - 128 units

*Maximum laying height

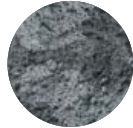


Garden Wall®: Rockface

Country Manor®

Keystone Country Manor® is random and rugged in appearance making these high strength concrete blocks conjure up images of old European estate walls adding character to any project.

- Perfect for stairs and retaining walls up to 0.9m and free standing walls to 0.7m with no consent required
- Create outdoor living designs such as fireplaces, fire pits and benches
- All units feature two face dimensions creating random patterns and offering a softer look
- Each unit has both a 90° end and a tapered end, allowing the units to be used in corners, straight lines and curves



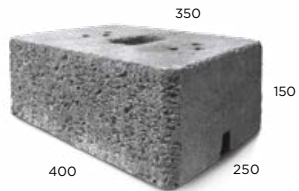
Rockface



Ash



Onyx



Large Unit



Small Unit



Medium Unit



Fibreglass Pin



Capping Unit

↑ Vertical wall up to 0.7m[^]
(90mm embedment)

↗ Batter setback up to 0.9m[^]
(90mm embedment)



8.6 sets per m² / 1.29 sets per lineal metre / 56kg a set / # per pallet - 24 sets

[^]Maximum laying height. Sold as set of three bricks. Free standing up to 0.75m

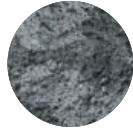


Country Manor®: Rockface

Compac III®

Keystone Compac® III features unrivaled aesthetic options and proven wall performance. Installers prefer the Compac III because it is easy to handle and install.

- Allows for higher wall heights with specific engineered design
- Effortlessly create curved or vertical walls
- Kidney shaped holes for the fibre glass pins ensure perfect vertical alignment



Rockface



Onyx



Straight Face 32kg



Capping Unit 26kg



Corner 45kg



Fibreglass Pins

↑ Vertical wall up to 0.8m[^]
(150mm embedment)

↗ Batter setback 8.8° up to 1m[^]
(150mm embedment)



11 units per m2 / 2.19 units per lineal metre / # per pallet - 45 units

[^]Maximum laying height

Retaining wall Compac® III: Rockface

EFFLORESCENCE

Naturally occurs in all concrete products. It is a deposit of white salts carried to the surface of the product by water, and happens most commonly when the product is exposed to moisture. Efflorescence will likely continue to occur until the moisture source is stopped, usually by sealing. Efflorescence can calcify with time and become difficult to remove. Efflorescence is not considered to be a material defect, but rather a naturally occurring issue common to all forms of concrete masonry. While Firth attempts to minimise the occurrence of efflorescence, we are unable to prevent or control this occurrence. Firth do not replace products that effloresce. **Refer to the Masonry Product Care sheet on our website for more information.**

Please note: All colour reproductions printed in this brochure are as close as possible to the original, however due to the printing process, some variations in colour and shading may occur. Keep in mind when you are choosing Firth retaining products, you are dealing with a natural material that can be influenced by a number of factors. While every care has been taken to obtain an accurate representation, the aggregates and oxides used to create these products are natural products and as a result some variations will occur. Variations between North and South Island manufactured products will occur due to locally sourced materials.

This guide has been produced to illustrate the options available. It does not provide detailed design and construction information. Further information can be found on firth.co.nz or call **0800 FIRTH 1**.

Keystone® is a registered trademark in NZ of Keystone Retaining Wall Systems LLC and used under licence by Firth, a division of Fletcher Building Holdings Ltd.



0800 FIRTH 1
FIRTH.CO.NZ

